



# ESS-400+

Monopolar / Bipolar  
Electrosurgical generator



OPERATING THEATRE

PROGRAM  
Program



# ESS-400+

## Monopolar/Bipolar Electrosurgical Generator

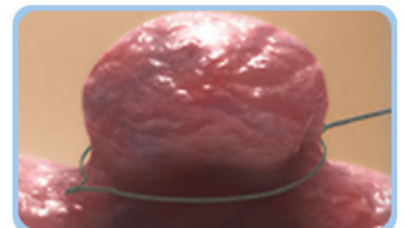
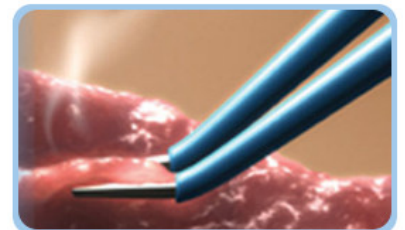


### ESS-400+ - Electro Surgical Generator

Device with Instant Tissue response technology and Tissue impedance measurement systems. This model offers top of the line features like 20 program modes, multiple blend modes, endo cut facility, best monopolar cutting and coagulation performance with precision controlled bipolar output and host of safety features.

### Performance Features :


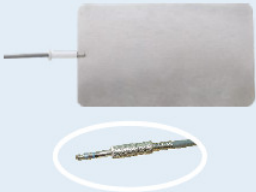




- 20 programs :**  
 ESS-400+ is a micro controller based model with all the required features. Full power output at low cost. Basic 400W model with 20 programs.
- Real Time Tissue Response Technology :**  
 Real Time Tissue Response Technology provides surgeons with superior performance at lower power settings, minimizing the risk of tissue damage and neuromuscular stimulation.
- Patient Plate Return Electrode Monitoring systems :**  
 Patient Plate Return Electrode Monitoring System provides instant indication of the quality of contact of the patient plate return electrode. Failure or poor contact results in fault indication with sound alarm which substantially reduces the risk of burns under the patient return electrode.
- High power efficiency of 97% :**  
 The power efficiency of the generator leads to multiple benefits like increased reliability, most compact size, high portability, economy and reduced power consumption.



### Technical Specifications :

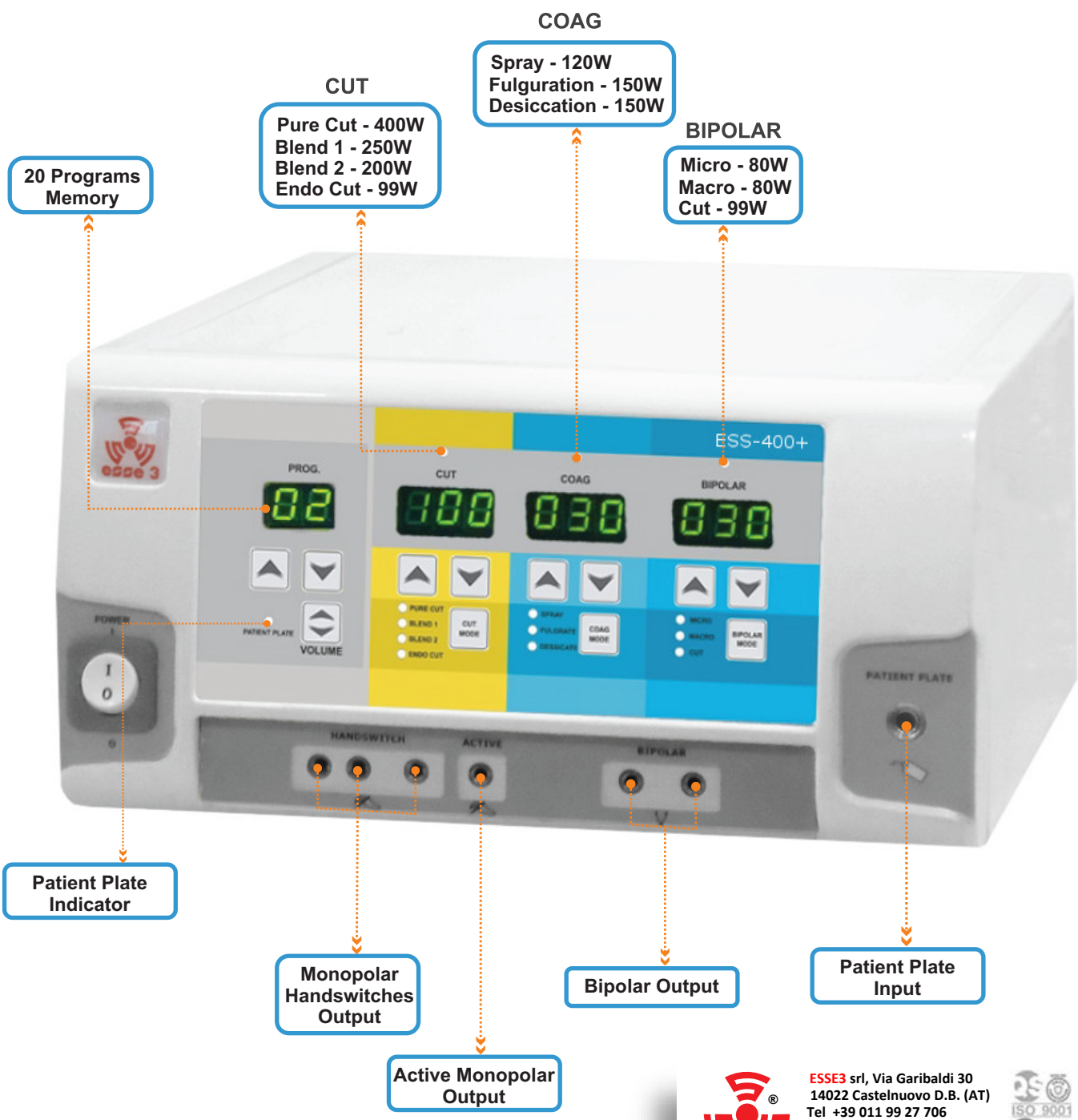
	Max. Power (Watts)	Rated Load (Ohms)
<b>Operating Frequency</b>	<b>480 KHz</b>	-
<b>No. of Program</b>	<b>20</b>	-
<b>Display</b>	<b>7 Segment Digital LED</b>	-
<b>Pure Cut</b>	<b>400 W</b>	<b>500</b>
<b>Blend 1</b>	<b>250 W</b>	<b>500</b>
<b>Blend 2</b>	<b>200 W</b>	<b>500</b>
<b>Endocut</b>	<b>99 W</b>	<b>500</b>
<b>Spray</b>	<b>120 W</b>	<b>500</b>
<b>Fulguration</b>	<b>150 W</b>	<b>500</b>
<b>Desiccation / Soft</b>	<b>150 W</b>	<b>500</b>
<b>Bipolar Coagulation Micro</b>	<b>80 W</b>	<b>100</b>
<b>Bipolar Coagulation Macro</b>	<b>80 W</b>	<b>100</b>
<b>Bipolar Cut</b>	<b>99 W</b>	<b>100</b>
<b>Dimension ( W x H x D )</b>	<b>300 mm x 150 mm x 340 mm</b>	
<b>Weight</b>	<b>5.5 Kg</b>	
<b>Input Voltage</b>	<b>170 to 260 VAC 50 Hz</b>	

### Standard Accessories :

<p><b>Monopolar Double Pedal Footswitch / Bipolar Single Pedal Footswitch</b></p> 	<p><b>Autoclavable Patient Plate With Cable Cord</b></p> 	<p><b>Silicon Patient Plate ( Optional )</b></p> 
<p><b>Chuk Handle With Electrode Autoclavable</b></p> 	<p><b>Autoclavable Bipolar Forcep With Cable</b></p> 	<p><b>Disposible Hand Switch Pencil Imported</b></p> 



ESS-400+



 ESSE3 srl, Via Garibaldi 30  
 14022 Castelnuovo D.B. (AT)  
 Tel +39 011 99 27 706  
 Fax +39 011 99 27 506  
 e-mail [esse3@chierinet.it](mailto:esse3@chierinet.it)  
 web: [www.esse3-medical.com](http://www.esse3-medical.com)



